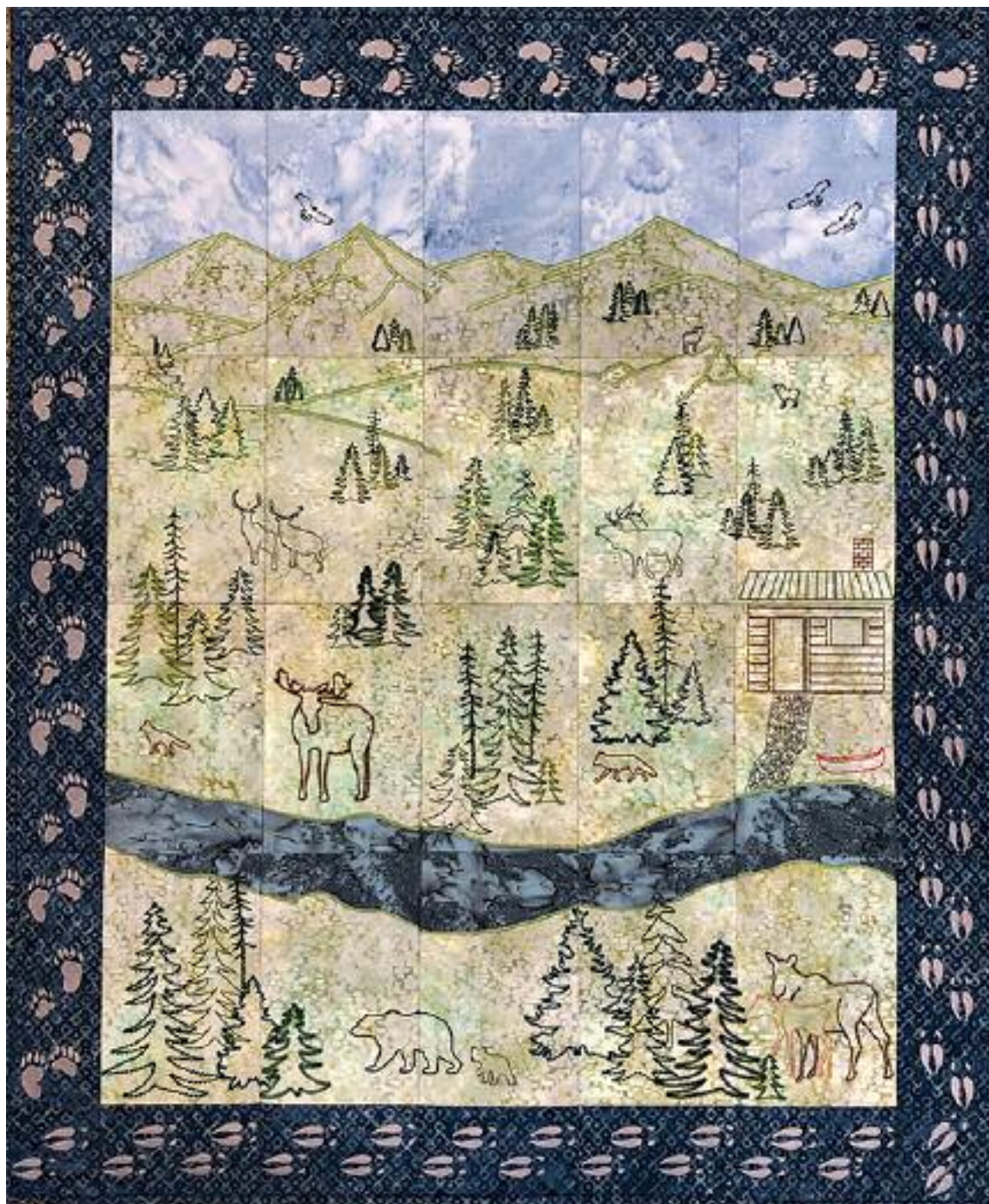


# North Woods Tiled Scene

## 26" x 32"



© 2020, Jackie Robinson



830 Douglas Hill Road  
Eureka, MT 59917  
406-297-7744  
[www.animasquilts.com](http://www.animasquilts.com)

## North Woods Tiled Scene

Stitched size of center tiles: 4-3/4" x 6-3/4"

### Isacord Threads:

0105	1526	5422
0132	1703	5643
0674	1776	5722
0776	3842***	5743
0842	4515	5822*
0945	4644**	5833
1055	5326	5934
1342	5335	5944
1355		

\* close match to Green Mountain

\*\* slight contrast to River

\*\*\*close match to border

Fabric - Cuts may vary by hoop sizes:  
(width x length)

1-1/2 yds Green Mountain. Not very textured.  
Cut (3) 14" x width of fabric (42")  
Cut (5) 6" x 5" for applique

1/2 yd Sky - Big Sky Blue  
Cut (1) 14" x width of fabric (42")

3/8 yd River  
Cut (10) 6" x 4" for applique

1-5/8 yds Borders & Binding  
Cut (2-3) 14" x width of fabric (42")  
14.5 x 25.5 cm hoop requires 3 strips  
16.5 x 26.5 cm hoop requires 2 strips  
Cut (4) 2-1/4" strips for binding

1 yd Backing  
1 yd Light Batting

Stabilizer - Cuts may vary by hoop sizes:

OESD Fusible Woven - White  
Fuse 10" x 41" to the back of each 42" wide  
fabric piece

OESD Ultra Clean & Tear White  
(or other Medium Weight)  
1 per hooping ( approx 10" x 14")

Medium Weight Cutaway Stabilizer  
1 per hooping - for floating  
Approx. 7" x 10"

## Best Press

OESD Perfect Embroidery Press Cloth

### My Fabric Combo:

Green Mountain - RK 19099-47 Grass  
Sky - Hoffman 1895 - D7 Dusty Blue  
River - Hoffman 1895-306 Swordfish  
Border - Hoffman P2937-19 Navy

**PLEASE READ THIS!** The Applique pieces have a placement stitch. The tack down that follows is only on the top and bottom - on purpose - to make removing stabilizer from seams easier. Trim close to the tackdown that is within the tile. Trim about 1/2" from the un-tacked sides and the tackdown outside of the tile.

1. Press each Piece of Mountain Green, Sky, River and Border with spritzed water, then with Best Press until they are absolutely smooth.

2. Center a Fusible Woven White on the back of all 42" wide pieces

3. Beginning at the right end of the strip, hoop the fabric strip with a 10" x 14" UCT (Ultra Clean & Tear). Float a smaller Medium weight cutaway under the hoop. After stitching, leave the stabilizer in place. Cut a precise 1/2" beyond the block outline. Repeat. You should get 5 hoopings across the width with a 14.5 x 25.5 cm hoop.

4. Trim the stabilizer from the seam allowances. Leave it on the blocks.

5. Press face down, firmly, on an Perfect Embroidery Press Cloth.

6. Layout the 20 scene blocks and stitch them in rows, using the block outline stitching and seam guide. Stitch just barely inside the block, touching the block outline, so it won't show on the finished side. Poke a pin through each of the corners where they should match, and a couple of pins along the seam, especially where stitching has to match. Fasten the two pieces together with wonder clips. Use a 2.75 mm stitch length. Move the needle if possible to stitch exactly next to the block outline stitch, inside the block. Trim away the stabilizer in the seam allowance. Press these seams open, using the Perfect Embroidery Press Cloth.





7. Stitch the horizontal rows together. It's easiest to sew the top two together, the bottom two, and then the center seam. Press these seams open, using the Perfect Embroidery Press Cloth. Time to admire!

8. Sew the side borders together with the long Bear or Moose prints. The Bear units alternate, beginning at the bottom with the large left foot, and ending at the top with the right foot. All four Moose prints are the same. As before match the block outline stitching, and press the seams open. The footprints all move clockwise around the quilt. Attach the Bear to the left of the quilt, and the Moose to the right. Ms. Moose looks like she's wearing high heels with stylish pointed toes. Refer to the photo for direction.

9. Stitch the top and bottom borders together. The Moose goes along the bottom and has the straight ahead Bear corner on the left end and the diagonal Moose on the right. Refer to the photo. The top border is Bear tracks with the diagonal bear corner at the left and the straight Moose corner at the right. Trim the stabilizer. Press everything open and attach to the quilt. Press.

10. Layer your wall hanging and backing, with or without a light weight batting, and stitch it together carefully in the seams, or as you choose. Bind.

Scene Block Instructions:

4-3/4" x 6-3/4" inside the Block Outline



- 1-1 Hoop Sky with 1 UCT.  
 Float 1 Medium Weight Cutaway  
 1 - 5822 - placement stitch for Mountain Position Green Mountain fabric  
 2 - 5822 - tack down of Green Mountain. Remove hoop, leaving fabric hooped. Trim Mountain fabric above tack down  
 Replace hoop and floating UCT  
 3 - 5822 - Mountain Edge & Hill Definition  
 4 - 5643 - Lower Right Tree  
 5 - 5944 - Lower Left Tree  
 6 - 5822 - Block Outline



8 -  
Outline



5822 - Block

- 1-2 Hoop Sky with 1 UCT.  
Float 1 Medium Weight Cutaway  
1 - 5822 - placement stitch for Mountain  
Position Green Mountain fabric  
2 - 5822 - tack down of Green Mountain.  
Remove hoop, leaving fabric  
hooped. Trim  
3 - 5822 - Mountain Edge & Hill Definition  
4 - 0132 - Eagle  
5 - 5643 - Center Tree  
6 - 4515 - Left Tree  
7 - 5833 - Right Tree  
8 - 5822 - Block Outline

- 1-4 Hoop Sky with 1 UCT.  
Float 1 Medium Weight Cutaway  
1 - 5822 - placement stitch for Mountain  
Position Green Mountain fabric  
2 - 5822 - tack down of Green Mountain.  
Remove hoop, leaving fabric  
hooped. Trim  
3 - 5822 - Mountain Edge & Hill Definition  
4 - 0945 - Ram  
5 - 5643 - Center Tree  
6 - 4515 - Right Tree



- 7 -  
8 -




5335 - Left Tree  
5822 - Block

Outline


- 1-3 Hoop Sky with 1 UCT.  
Float 1 Medium Weight Cutaway  
1 - 5822 - placement stitch for Mountain  
Position Green Mountain fabric  
2 - 5822 - tack down of Green Mountain.  
Remove hoop, leaving fabric  
hooped. Trim  
3 - 5822 - Mountain Edge & Hill Definition  
4 - 5944 - Right Tall Skinny Tree  
5 - 5643 - Left Tree  
6 - 5934 - 2nd from Left Tree  
7 - 5743 - 2nd from Right Tree

- 1-5 Hoop Sky with 1 UCT.  
Float 1 Medium Weight Cutaway  
1 - 5822 - placement stitch for Mountain  
Position Green Mountain fabric  
2 - 5822 - tack down of Green Mountain.  
Remove hoop, leaving fabric  
hooped. Trim  
3 - 5822 - Mountain Edge & Hill Definition  
4 - 0132 - Eagles  
5 - 5643 - Lower Center Tree  
6 - 4515 - Lower Right & Upper Right Trees

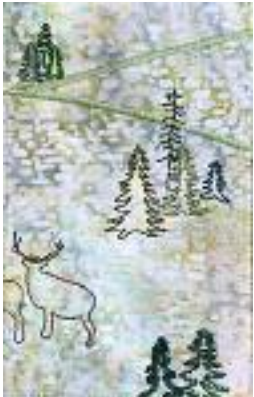
7 - 5335 - Lower Left  
 Tree  
 8 - 5934 - Upper Left  
 Tree  
 9 - 5822 - Block Outline



5 - 5822 - Hill Definition  
 6 - 5944 - Center Tall  
 Tree  
 7 - 4515 - Center Right  
 Tree  
 8 - 5833 - Center 2nd  
 from Right Tree  
 9 - 5934 - Center Left  
 Tree  
 10 - 5326 - Top Center Tree  
 11 - 5722 - Top Right Tree  
 12 - 5743 - Top Left Tree  
 13 - 5822 - Block Outline



2-1 Hoop Green Mountain with 1 UCT.  
 Float 1 Medium Weight Cutaway  
 1 - 5833 - Lower Left Tree  
 2 - 5934 - Lower Tall Center Tree  
 3 - 5335 - Lower Right Tree  
 4 - 0776 - Stag  
 5 - 1776 - Antlers  
 6 - 5822 - Hill Definition  
 7 - 4515 - Center Spruce  
 8 - 5722 - Center Right  
 Tree  
 9 - 5743 - Center Left  
 Tree  
 10 - 5643 - Top Tree  
 Base  
 11 - 5822 - Block  
 Outline



2-3 Hoop Green Mountain  
 with 1 UCT.  
 Float 1  
 Medium Weight  
 Cutaway  
 1 - 5934 - Lower Left  
 Tree  
 2 - 5643 - Lower 2nd  
 from Left Tree  
 3 - 5326 - Lower 2nd  
 from Right Tree  
 4 - 5722 - Lower Right Tree  
 5 - 5822 - Hill Definition  
 6 - 5335 - Top Center Tree  
 7 - 5743 - Top Right Tree  
 8 - 5833 - Top Left Tree  
 9 - 5822 - Block Outline



2-2 Hoop Green Mountain with 1 UCT.  
 Float 1 Medium Weight Cutaway  
 1 - 5643 - Lower Right Tree  
 2 - 5335 - Lower Left Tree  
 3 - 0776 - Stags  
 4 - 1776 - Antlers



2-4 Hoop  
tain with 1 UCT.  
Float 1

Cutaway

1 - 5822

2 - 5944

Top & Upper

Tree

3 - 0776 - Elk

4 - 1776 - Antlers

5 - 5335 - Lower Right Tree part

6 - 5934 - Right Tree

7 - 5643 - Upper Right Tree

8 - 4515 - Upper Left Tree

9 - 5822 - Block Outline



Green Moun-

Medium Weight

- Hill Definition

- Lower Tree

Skinny

3-1 Hoop  
tain with 1 UCT.  
Float 1

Cutaway

1 - 5822 - placement stitch for River  
Position River fabric

2 - 5822 - tack down of River.

Remove hoop, leaving fabric  
hooped. Trim River fabric.

Replace hoop and floating UCT

3 - 5822 - River edge

4 - 4644 - River Ripples

5 - 5934 - Tall Thin Tree

6 - 5335 - Right Tree

7 - 5643 - Second Tree from Right

8 - 5833 - Left Tree

9 - 1342 - Fox

10 - 5822 - Block Outline



Green Moun-

Medium Weight

2-5 Hoop  
tain with 1 UCT.

Float 1 Medium Weight Cutaway

1 - 5822 - Hill Definition

2 - 5643 - Upper 2nd from Left Tree

3 - 5944 - Lower Center Tall Skinny & Upper  
Left Trees

4 - 5335 - Lower Left & Upper 2nd from  
Right Trees

5 - 5934 - Lower Right & Upper Right Trees

6 - 0945 - Ram

7 - 5422 - Roof

8 - 1526 - Chimney

9 - 5822 - Block Outline



Green Moun-

3-2 Hoop Green Mountain with 1 UCT.  
Float 1 Medium Weight Cutaway

1 - 5822 - placement stitch for River  
Position River fabric

2 - 5822 - tack down of River.

Remove hoop, leaving fabric  
hooped. Trim River fabric.

Replace hoop and floating UCT

3 - 5822 - River edge

4 - 4644 - River Ripples

5 - 5934 - Small Left Tree

6 - 5643 - Right Tree

7 - 5335 - Center Tree

8 - 1055 - Moose

9 - 5822 - Block Outline

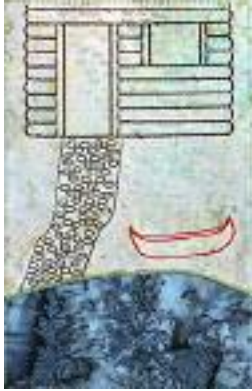




- 3-3 Hoop Green Mountain with 1 UCT.  
 Float 1 Medium Weight Cutaway  
 1 - 5822 - placement stitch for River  
 Position River fabric  
 2 - 5822 - tack down of River.  
 Remove hoop, leaving fabric  
 hooped. Trim River fabric.  
 Replace hoop and floating UCT  
 3 - 5822 - River edge  
 4 - 5944 - Left Tall Skinny Tree  
 5 - 5643 - Right Tall Skinny Tree  
 6 - 5833 - Small Tree on Right  
 7 - 5326 - Left Tree  
 8 - 5743 - Center Tree  
 9 - 5822 - Block Outline



- 3-5 Hoop Green Mountain with 1 UCT.  
 Float 1 Medium Weight Cutaway  
 1 - 5822 - placement stitch for River  
 Position River fabric  
 2 - 5822 - tack down of River.  
 Remove hoop, leaving fabric  
 hooped. Trim River fabric.  
 Replace hoop and floating UCT  
 3 - 5822 - River edge  
 4 - 4644 - River Ripples  
 5 - 0674 - Sidewalk  
 6 - 1703 - Canoe  
 7 - 1355 Cabin  
 8 - 5822 - Block Outline



- 3-4 Hoop Green Mountain with 1 UCT.  
 Float 1 Medium Weight Cutaway  
 1 - 5822 - placement stitch for River  
 Position River fabric  
 2 - 5822 - tack down of River.  
 Remove hoop, leaving fabric  
 hooped. Trim River fabric.  
 Replace hoop and floating UCT  
 3 - 5822 - River edge  
 4 - 4644 - River Ripples  
 5 - 5944 - Center Skinny Tree  
 6 - 5326 - Right Tree  
 7 - 4515 - Spruce on Left  
 8 - 1342 - Fox  
 9 - 5822 - Block Outline



- 4-1 Hoop Green Mountain with 1 UCT.  
 Float 1 Medium Weight Cutaway  
 1 - 5822 - placement stitch for River  
 Position River fabric  
 2 - 5822 - tack down of River.  
 Remove hoop, leaving fabric  
 hooped. Trim River fabric.  
 Replace hoop and floating UCT  
 3 - 5822 - River edge  
 4 - 5944 - Tall Skinny Tree  
 5 - 4515 - Blue Spruce  
 6 - 5934 - outline tree  
 7 - 5335 - Fir  
 8 - 5822 - Block Outline



- 4-2 Hoop Green Mountain with 1 UCT.  
 Float 1 Medium Weight Cutaway  
 1 - 5822 - placement stitch for River  
 Position River fabric  
 2 - 5822 - tack down of River.  
 Remove hoop, leaving fabric  
 hooped. Trim River fabric.  
 Replace hoop and floating UCT  
 3 - 5822 - River edge  
 4 - 4644 - River Ripples  
 5 - 4515 - Blue Spruce  
 6 - 5643 - Small tree  
 7 - 1776 - Mama Bear  
 8 - 5822 - Block Outline



- 4-4 Hoop Green Mountain with 1 UCT.  
 Float 1 Medium Weight Cutaway  
 1 - 5822 - placement stitch for River  
 Position River fabric  
 2 - 5822 - tack down of River.  
 Remove hoop, leaving fabric  
 hooped. Trim River fabric.  
 Replace hoop and floating UCT  
 3 - 5822 - River edge  
 4 - 4644 - River Ripples  
 5 - 4515 - Blue Spruce  
 6 - 5934 - Tall Tree  
 7 - 5326 - Short left tree  
 8 - 5335 - Right Tree  
 9 - 5822 - Block Outline



- 4-3 Hoop Green Mountain with 1 UCT.  
 Float 1 Medium Weight Cutaway  
 1 - 5822 - placement stitch for River  
 Position River fabric  
 2 - 5822 - tack down of River.  
 Remove hoop, leaving fabric  
 hooped. Trim River fabric.  
 Replace hoop and floating UCT  
 3 - 5822 - River edge  
 4 - 4644 - River Ripples  
 5 - 4515 - Blue Spruce  
 6 - 1776 - Mama Bear  
 7 - 0776 - Bear Cub  
 8 - 5822 - Block Outline



- 4-5 Hoop  
 tain with 1  
 Float 1  
 Weight Cut-  
 1 - 5822 - placement stitch for River  
 Position River fabric  
 2 - 5822 - tack down of River.  
 Remove hoop, leaving fabric  
 hooped. Trim River fabric.  
 Replace hoop and floating UCT  
 3 - 5822 - River edge  
 4 - 1055 - Mama Moose  
 5 - 0842 - Moose Calf  
 6 - 5643 - Small Tree  
 7 - 5335 - Left Tree
- Green Moun-  
 UCT.  
 Medium  
 away



8 - 5822 -



Block Outline

4-3/4" x 2-1/2" inside the Block Outline

Side Borders

2-1/2" x 6-

Outline

3/4" inside the Block

\* If you use a 14.5cm x 25.5 cm hoop, use BearTopMooseBottom combo & make 5

Bear Top Bor-



ders - make 5

Hoop Border with 1 UCT.

Float 1

Weight Cut-  
1 -  
prints



Medium  
away  
0105 - Foot-

2 - 3842 - Block Outline

Bear Borders 1 x 2 - make 2 of each

\* If you use a 16.5cm x 26.5 cm hoop, use Bear Side Border 1x2 combo & make 2

Hoop Border with 1 UCT.

Float 1 Medium Weight Cutaway

1 - 0105 - Footprints

2 - 3842 - Block Outline



Moose Bottom Borders - make 5

Hoop Border with 1 UCT.

Float 1 Medium Weight Cutaway

1 - 0105 - Footprints

2 - 3842 - Block Outline

Corner Borders

2-1/2" x 2-1/2" inside the Block Outline

\* If you use a 16.5cm x 26.5 cm hoop, use 4 Corners combo & make 1

Moose Border 1 -



make 4

\* If you use a hoop, use

MooseSideBorderx2 combo & make 2

16.5cm x 26.5 cm

derx2 combo &

Hoop Border with 1 UCT.

Float 1 Medium Weight Cutaway

1 - 0105 - Footprints

2 - 3842 - Block Outline

Top and Bottom Borders

© 2020, Jackie Robinson



830 Douglas Hill Road  
Eureka, MT 59917

406-297-7744

www.jackierobinsonquilts.com

Bear & Moose Corners - make 1 of each