



# Magnificent Blooms

By Jackie Robinson  
of Animas Quilts



*free pattern* MY WINDOW  
BY JACKIE ROBINSON (51" X 50")

This is a collection that is really well named... its blooms are truly magnificent! The featured bloom is a delicate white calla lily, beautifully painted and surrounded by other colorful flowers. The focal print is a stunning calla lily panel, dramatically presented on a textured black background. Bouquets, calla lily allovers in varying scales, and a wonderful variety of textures, including a floral stripe, accompany the panel. Like all of Jackie's collections, these fabrics were designed to provide multiple design options, and Jackie has designed a fabulous selection of patterns to go with the collection. Truly magnificent!

OCTOBER/NOVEMBER 2019 DELIVERY

18 SKUS • 100% COTTON

PRINTS SHOWN AT 20% OF ACTUAL SIZE

FULL COLLECTION (15 YD): MGBLM15 • (10 YD): MGBLM10

FOR MORE PROJECTS AND PATTERNS, VISIT:  
ANIMASQUILTS.COM

PRECUTS AVAILABLE



10X10'S STRIP-PIES  
MBL10PK STMBLPK

Benartex



6780-12 • MAGNIFICENT BLOOM PANEL  
BLACK/MULTI (SHOWN REDUCED)



6782-12 • MAGNIFICENT BLOOM  
BOUQUET • BLACK/MULTI



6782-40 • MAGNIFICENT BLOOM  
BOUQUET • SAGE



6781-12 • MAGNIFICENT BLOOM STRIPE • BLACK/MULTI



6783-12  
IRIS • BLACK/SAGE



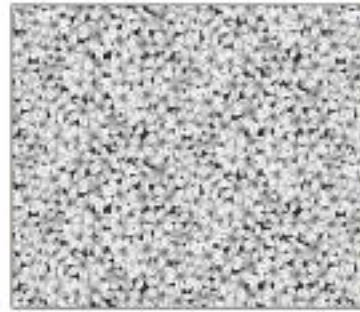
6783-40  
IRIS • SAGE



6784-12  
CALLA LILY • BLACK/MULTI



6784-40  
CALLA LILY • SAGE



6785-11  
HYACINTH PETALS • GRAY



6785-40  
HYACINTH PETALS • SAGE



6786-10  
NOUVEAU STRIPE • RED



6786-12  
NOUVEAU STRIPE • BLACK



6786-44  
NOUVEAU STRIPE • GREEN



6787-01  
NOUVEAU • LT PINK



6787-04  
NOUVEAU • LT SAGE



6787-08  
NOUVEAU • LT GRAY



6788-12 • MAGNIFICENT BLOOM  
BOUQUET MED • BLACK/MULTI



6788-13 • MAGNIFICENT BLOOM  
BOUQUET MED • CLOUD/MULTI



2966-12\*  
WAVE TEXTURE • BLACK



2966-14\*  
WAVE TEXTURE • STEEL



2966-21\*  
WAVE TEXTURE • RASPBERRY



2966-46\*  
WAVE TEXTURE • BASIL